



MS1608HC SERIES~ High Current Ceramic Chip Inductors



FEATURES :

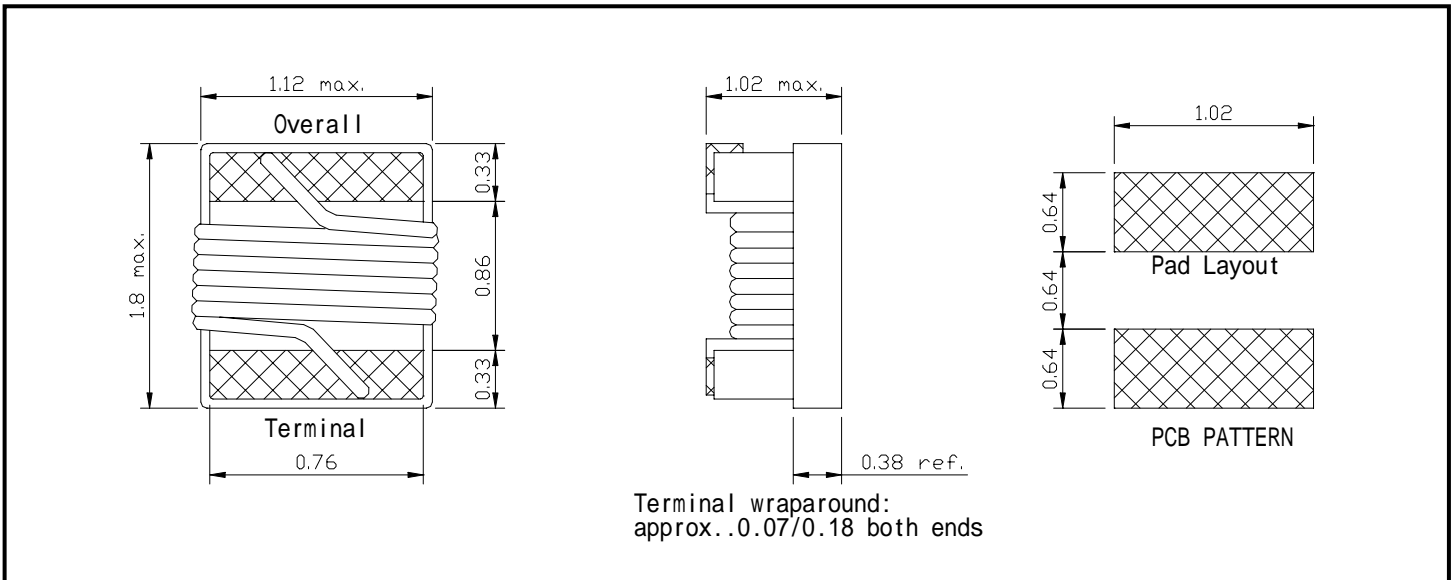
- High current ratings - up to 2.4 Amps
- Will handle transient currents up to 50% higher.
- Inductance values from 1.6 to 24 nH
- Lead Free with RoHS Compliant .

PART NUMBERING SYSTEM

| | | | | | |
|-----------|-------------------|---|----------------|---|-----------|
| <u>MS</u> | <u>1 6 0 8 HC</u> | - | <u>1 0 N J</u> | - | <u>LF</u> |
| TYPE | DIMENSIONS | | INDUCTANCE | | LEAD FREE |

SHAPES AND DIMENSIONS

UNIT : mm





MS1608HC SERIES ~ High Current Ceramic Chip Inductors



SPECIFICATION TABLE

| PART NUMBER | INDUCTANCE (nH) | TOLERANCE | Q. MIN. | SRF (MHz) MIN. | DCR () (max) | IDC (A) (max) |
|------------------|-----------------|-----------|-----------|----------------|---------------|---------------|
| MS1608HC-1N6X-LF | 1.6@250MHz | B,S | 24@900MHz | 12500 | 0.030 | 2.40 |
| MS1608HC-3N6X-LF | 1.8@250MHz | B,S | 24@900MHz | 5900 | 0.048 | 2.30 |
| MS1608HC-3N9X-LF | 2.2@250MHz | B,S | 25@900MHz | 5900 | 0.054 | 2.20 |
| MS1608HC-6N8X-LF | 3.3@250MHz | B,S | 35@900MHz | 5800 | 0.054 | 2.10 |
| MS1608HC-7N5X-LF | 3.6@250MHz | B,S | 38@900MHz | 3700 | 0.059 | 2.10 |
| MS1608HC-10NX-LF | 10@250MHz | G,J,K | 38@900MHz | 3700 | 0.071 | 2.00 |
| MS1608HC-11NX-LF | 11@250MHz | G,J,K | 38@900MHz | 3000 | 0.075 | 2.00 |
| MS1608HC-12NX-LF | 12@250MHz | G,J,K | 38@900MHz | 2800 | 0.080 | 1.90 |
| MS1608HC-15NX-LF | 15@250MHz | G,J,K | 40@900MHz | 2800 | 0.099 | 1.90 |
| MS1608HC-18NX-LF | 18@250MHz | G,J,K | 42@900MHz | 2400 | 0.099 | 1.80 |
| MS1608HC-24NX-LF | 24@250MHz | G,J,K | 42@900MHz | 2400 | 0.105 | 1.80 |

INDUTANCE TOLERANCE : B=±0.2nH, S=±0.3nH, G=±2%, J=±5%, K=±10%

TEST EQUIPMENT: Inductance measured using an Agilent/HP 4286A impedance analyzer .

Operating temperature range -40°C to +125°C.

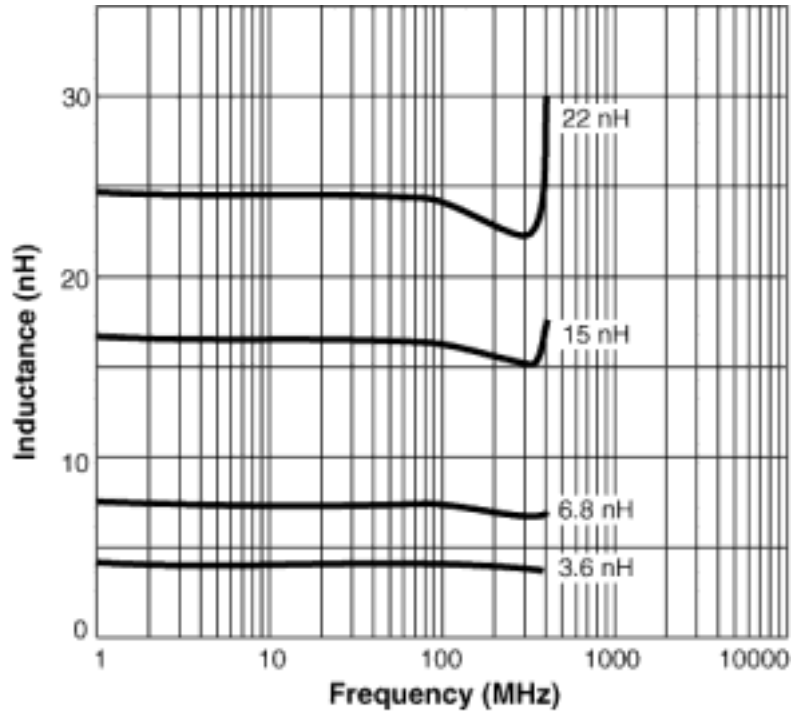
Electrical specifications at 25°C.



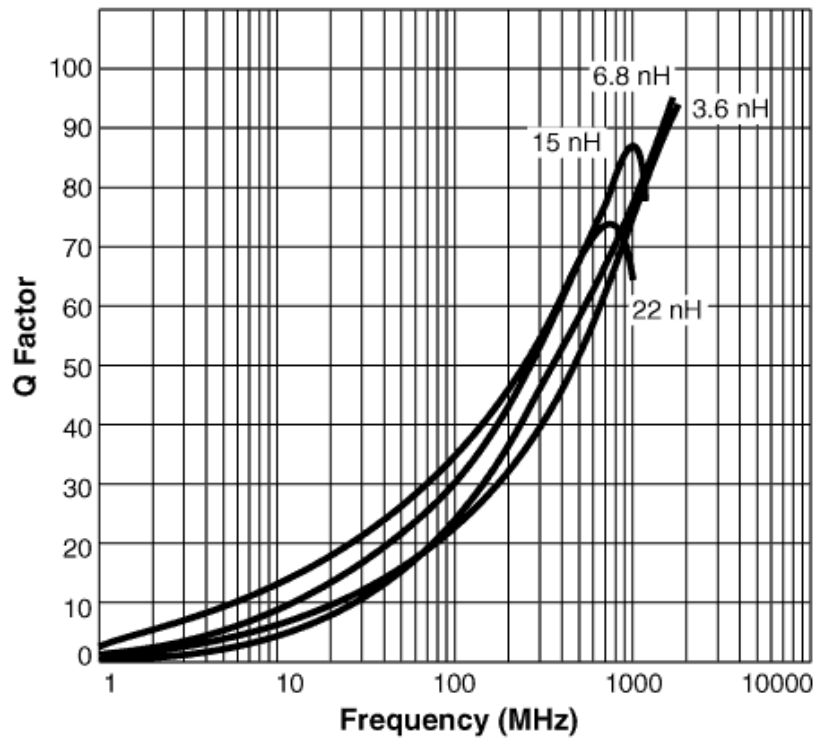
MS1608HC SERIES ~ High Current Ceramic Chip Inductors

TYPICAL ELECTRICAL CHARACTERISTICS

INDUCTANCE vs. FREQUENCY CHARACTERISTICS



Q vs. FREQUENCY CHARACTERISTICS

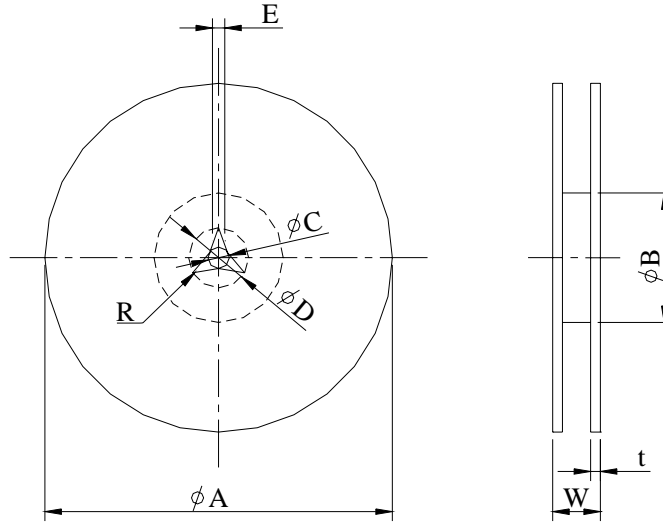




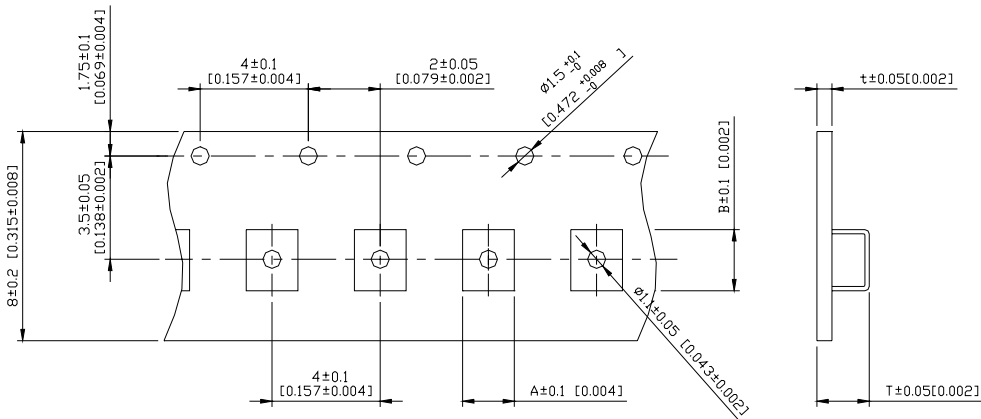
MS1608HC SERIES ~ High Current Ceramic Chip Inductors



PACKAGING SPECIFICATION



| | A | B | C | D | E | W8 | W12 | t | R |
|-------------------|-------|-------|--------|--------|---|--------|----------|----------|---|
| T(178mm) Reel | 178±2 | 60±1 | 13±0.8 | 21±0.8 | 2 | 10±1.5 | 14.5±1.5 | 1.27±0.2 | 1 |
| T(330mm) Reel | 330±2 | 100±2 | 13±0.8 | 21±0.8 | 2 | 10±1.5 | 14.5±1.5 | 1.27±0.2 | 1 |



| TYPE | A | B | T | t | T(178mm) | T(330mm) |
|----------|------|------|------|-----|---------------|-----------|
| MS1608HC | 1.10 | 1.90 | 1.10 | 0.2 | 3000 pcs/reel | - |