



# MS2520LC SERIES ~ Wire Wound Ceramic Chip Inductors

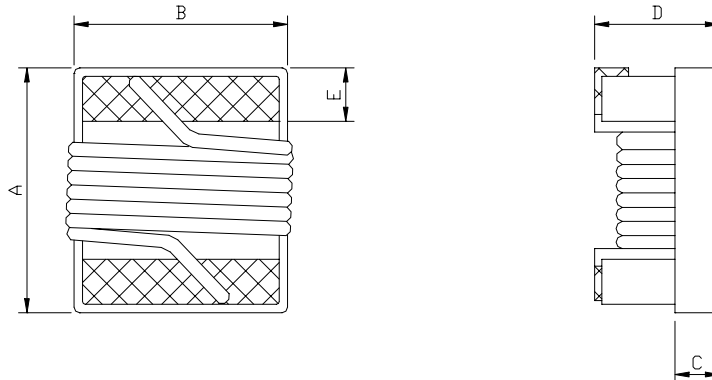


## PART NUMBERING SYSTEM



## SHAPES AND DIMENSIONS

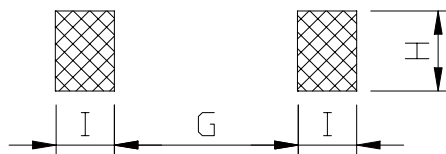
UNIT : mm



**A=2.9 Max. B=2.5 Max. C=1.2 Ref. D=2.1 Max. E=0.55±0.1**

## RECOMMENDED PATTERNS

UNIT : mm



**G=1.27 H=2.54 I=1.02**



## MS2520 SERIES ~ Wire Wound Ceramic Chip Inductors



### SPECIFICATION TABLE

PART NUMBER	INDUCTANCE (uH)	TOLERANCE	Q. MIN.	SRF (MHz) MIN.	DCR ( ) (max)	Irms (mA) (max)
MS2520LC-1R0 -LF	1.0@7.96MHz	M	12@7.96MHz	345	0.13	1000
MS2520LC-1R5 -LF	1.5@7.96MHz	M	12@7.96MHz	100	0.17	850
MS2520LC-2R2 -LF	2.2@7.96MHz	M	12@7.96MHz	78	0.21	775
MS2520LC-3R3 -LF	3.3@7.96MHz	K,M	12@7.96MHz	48	0.26	715
MS2520LC-4R7 -LF	4.7@7.96MHz	K,M	12@7.96MHz	46	0.52	505
MS2520LC-6R8 -LF	6.8@7.96MHz	K,M	12@7.96MHz	33	0.72	432
MS2520LC-8R2 -LF	8.2@2.52MHz	K,M	12@2.52MHz	30	0.76	410
MS2520LC-100 -LF	10@2.52MHz	K,M	12@2.52MHz	28	0.86	392
MS2520LC-150 -LF	15@2.52MHz	K,M	12@2.52MHz	21	1.09	342
MS2520LC-220 -LF	22@2.52MHz	K,M	12@2.52MHz	18	1.96	260
MS2520LC-330 -LF	33@2.52MHz	K,M	12@2.52MHz	15	2.47	236

Inductance Q and SRF are measured in HP-E4991A impedance analyzer with HP-16197A fixture.

Inductance Tolerance : K=10%, M=20%.

RDC is measured in Chroma 16502 mill ohm meter.(or equivalent)

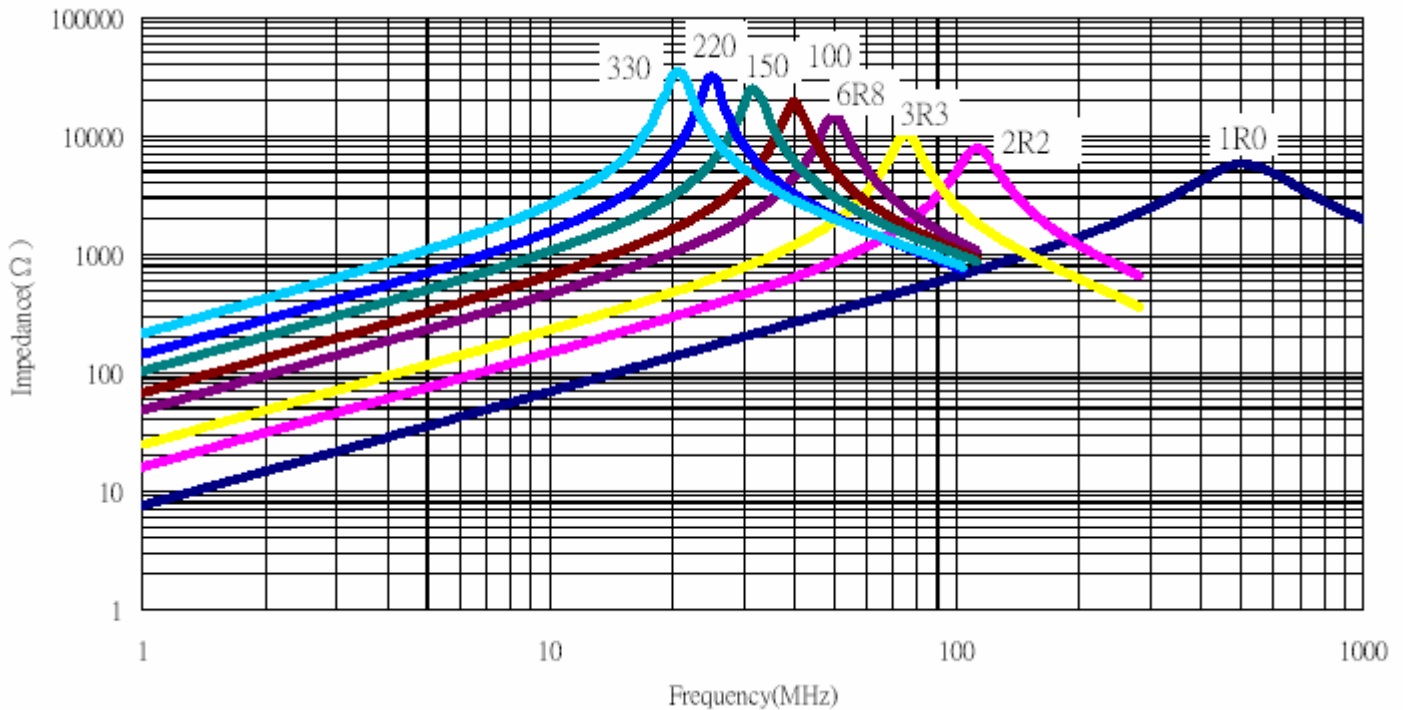
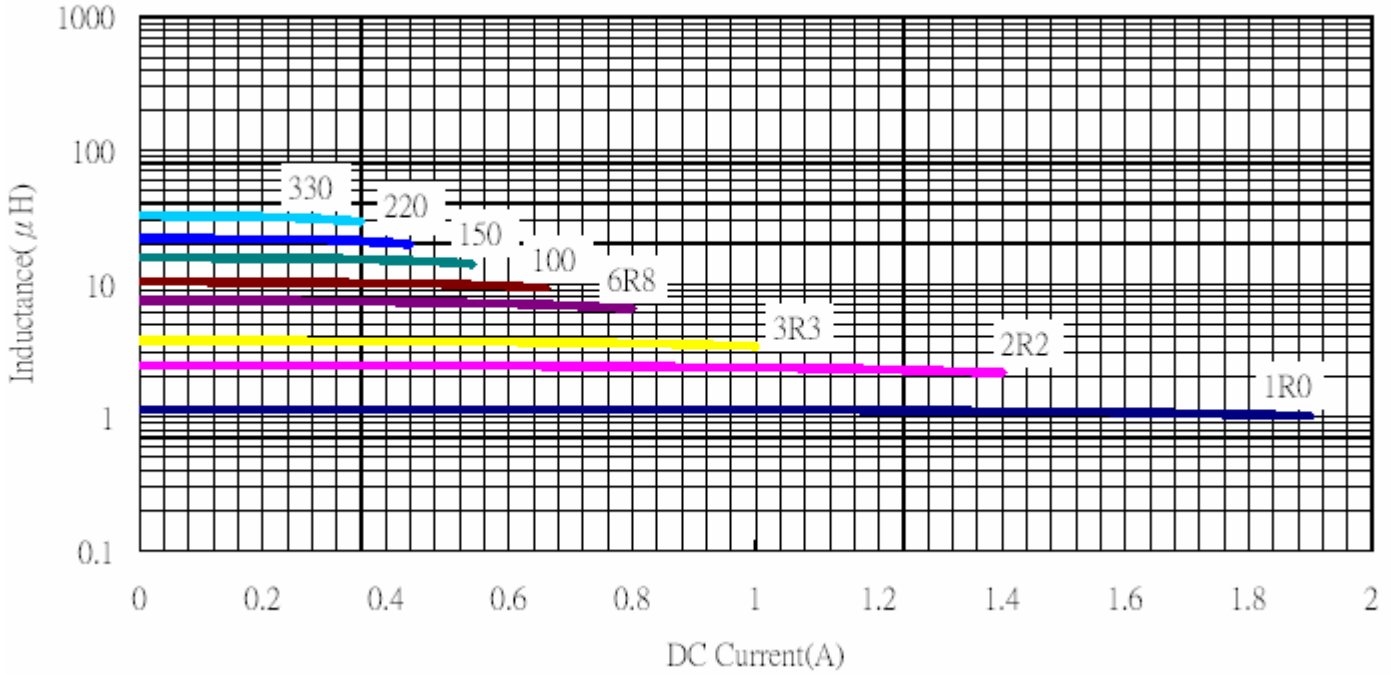
Irms For 15 rise form 25 ambient.



# MS2520 SERIES ~ Wire Wound Ceramic Chip Inductors



## CURVE

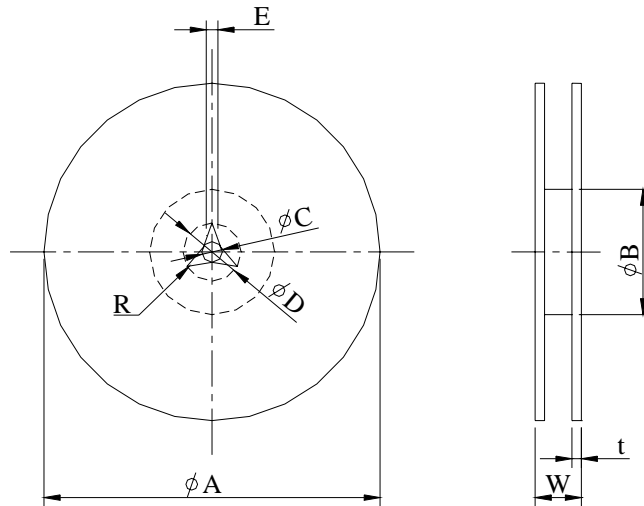




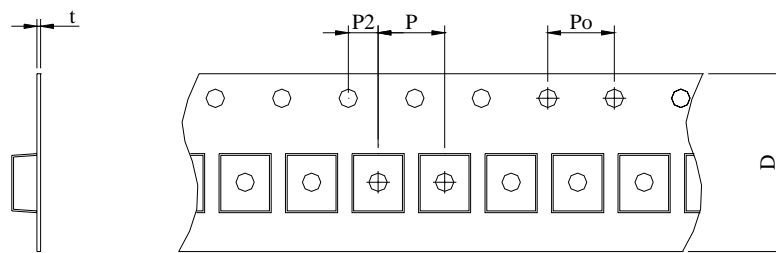
# MS2520 SERIES ~ Wire Wound Ceramic Chip Inductors



## PACKAGING SPECIFICATION



	A	B	C	D	E	W	t	R
T( 180mm) Reel	180	60	13	-	-	14.4	-	-



TYPE	Reel/pcs	P	Po	P2	t	D
2520LC-LF	2000	4	4	2	1	8