



RCB1618 SERIES



PART NUMBERING SYSTEM

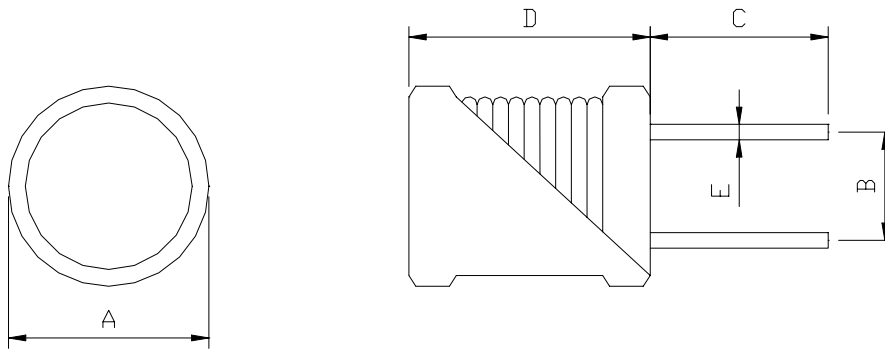
<u>RCB</u>	<u>1 6 1 8 U</u>	-	<u>1 0 0 M</u>	-	<u>LF</u>
TYPE	DIMENSIONS		INDUCTANCE		LEAD FREE

U : UL Tube

P : PVC Tube

SHAPES AND DIMENSIONS

UNIT : mm



A= 18.0 Max. , B= 10.0±0.5 , C= 15.0±5.0 , D= 20.0 Max. , E= 1.0 Ref.

STRUCTURAL DIAGRAM :

	COMPONENT	MATERIALS
	1.Core	Ferrite core
	2.Wire	Polyurethane enameled copper wires
	3.Lead wire	Tinned copper wires
	4.Tube	Heat shrinkable tube, PVC or UL
	5.Glue	Epoxy resin



RCB1618 SERIES



RoHS Compliant

SPECIFICATION TABLE

PART NUMBER	INDUCTANCE (μ H)	DCR (m Ω) (max)	IDC (A) (max)	TEST FREQ. (f)
RCB1618-100M-LF	10	9	8.0	1KHz
RCB1618-250K-LF	25	22	6.0	1KHz
RCB1618-500K-LF	50	36	4.0	1KHz
RCB1618-101K-LF	100	90	3.0	1KHz
RCB1618-251K-LF	250	150	2.0	1KHz
RCB1618-501K-LF	500	300	1.2	1KHz
RCB1618-101K-LF	1000	600	1.0	1KHz

1. Inductors Tolerance : K = +/-10% ; M=+/-20%
2. Operating temperature range -40 to +85
3. Electrical specifications at 25