



SDC2D09 SERIES - Low Profile SMD Power Inductors

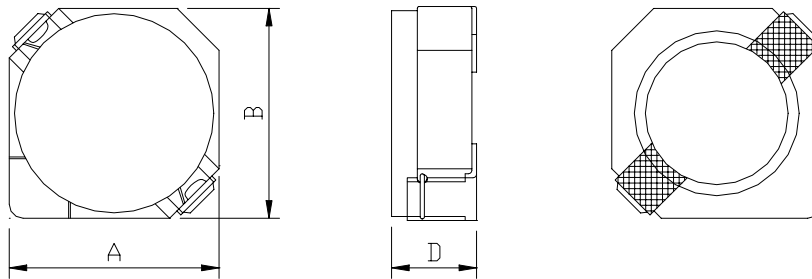


PART NUMBERING SYSTEM

<u>SDC</u>	<u>2 D 0 9</u>	-	<u>1 R 2 N</u>	-	<u>LF</u>
TYPE	DIMENSIONS		INDUCTANCE		LEAD FREE

SHAPES AND DIMENSIONS

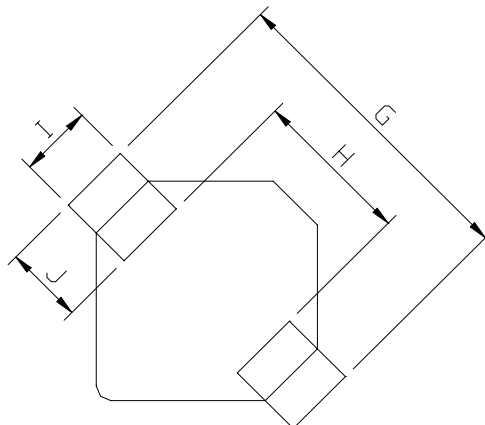
UNIT : mm



A=3.20 max. B=3.20 max. D=1.0 max.

RECOMMENDED PATTERNS

UNIT : mm



G= 4.3 H= 1.7 I= 1.3 J= 1.3



SDC2D09 SERIES

ELECTRICAL CHARACTERISTICS :

PART NUMBER	INDUCTANCE (μ H)	DCR (m Ω) (Max.)	Isat (A) (Max.)	Irms (A) (Max.)	TEST FREQ. (f)
SDC2D09-1R2N-LF	1.2 \pm 30%	97.50	0.80	1.24	100KHz
SDC2D09-1R5N-LF	1.5 \pm 30%	110.0	0.73	1.15	100KHz
SDC2D09-1R8N-LF	1.8 \pm 30%	131.3	0.65	1.06	100KHz
SDC2D09-2N2N-LF	2.2 \pm 30%	143.8	0.60	1.05	100KHz
SDC2D09-2N7N-LF	2.7 \pm 30%	150.0	0.53	0.98	100KHz
SDC2D09-3N3N-LF	3.3 \pm 30%	193.8	0.47	0.84	100KHz
SDC2D09-3N9N-LF	3.9 \pm 30%	225.0	0.45	0.72	100KHz
SDC2D09-4N7N-LF	4.7 \pm 30%	287.5	0.41	0.64	100KHz
SDC2D09-5N6N-LF	5.6 \pm 30%	325.0	0.37	0.59	100KHz
SDC2D09-6N8N-LF	6.8 \pm 30%	425.0	0.33	0.53	100KHz
SDC2D09-8N2N-LF	8.2 \pm 30%	475.0	0.30	0.46	100KHz
SDC2D09-100N-LF	10 \pm 30%	537.5	0.28	0.42	100KHz

Isat : DC current at which the inductance drops 35% (typ) from its value without current.

Irms: The actual current when temperature of coil becomes 40°C . (Ta=+20°C)

Operating temperature range -40°C to +85°C , Electrical specifications at 20°C.

Packing : 13" reel, machine-ready ,embossed plastic tape (2,000 parts per full reel).