



**SDC2D11HP SERIES - Low Profile SMD Power Inductors**



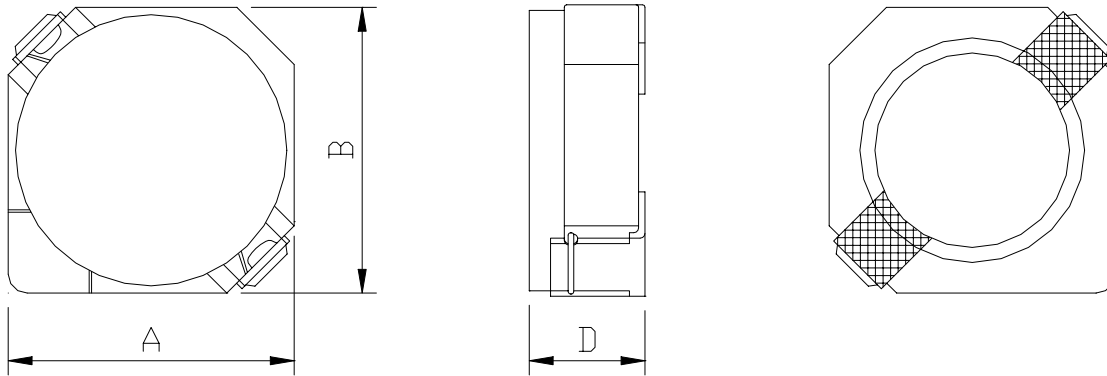
RoHS Compliant

**PART NUMBERING SYSTEM**

<b><u>SDC</u></b>	<b><u>2 D 1 1 H P</u></b>	-	<b><u>1 R 5 N</u></b>	-	<b><u>LF</u></b>
TYPE	DIMENSIONS		INDUCTANCE		LEAD FREE

**SHAPES AND DIMENSIONS**

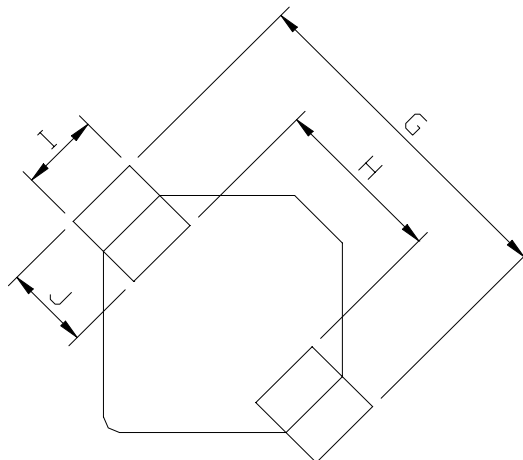
UNIT : mm



**A=3.20 max. B=3.20 max. D=1.2 max.**

**RECOMMENDED PATTERNS**

UNIT : mm



**G= 4.3 H= 1.7 I= 1.3 J= 1.3**



## SDC2D11HP SERIES



RoHS Compliant

### ELECTRICAL CHARACTERISTICS :

PART NUMBER	INDUCTANCE ( $\mu$ H)	DCR (m $\Omega$ ) (Max.)	Isat (A) ( Max. )	Irms (A) ( Max. )	TEST FREQ. ( f )
SDC2D11HP-1R5N-LF	1.5 $\pm$ 30%	80	1.35	1.60	100KHz
SDC2D11HP-2R2N-LF	2.2 $\pm$ 30%	120	1.10	1.30	100KHz
SDC2D11HP-3R3N-LF	3.3 $\pm$ 30%	135	0.90	0.98	100KHz
SDC2D11HP-4R7N-LF	4.7 $\pm$ 30%	238	0.75	0.85	100KHz
SDC2D11HP-6R8N-LF	6.8 $\pm$ 30%	371	0.63	0.65	100KHz
SDC2D11HP-100N-LF	10 $\pm$ 30%	559	0.52	0.52	100KHz

Isat : DC current at which the inductance drops 35% (typ) from its value without current.

Irms: The actual current when temperature of coil becomes 40°C . ( Ta=+20°C )

Operating temperature range -40°C to +85°C , Electrical specifications at 20°C.

Packing : 13" reel, machine-ready ,embossed plastic tape ( 2,000 parts per full reel).