



**SDC2D14J SERIES - Low Profile SMD Power Inductors**



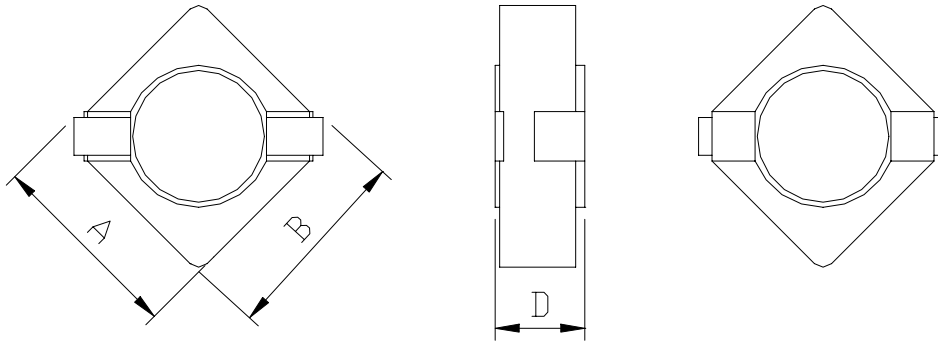
RoHS Compliant

**PART NUMBERING SYSTEM**

<b>SDC</b>	<b>2 D 1 4 J</b>	-	<b>1 R 5 N</b>	-	<b>LF</b>
TYPE	DIMENSIONS		INDUCTANCE		LEAD FREE

**SHAPES AND DIMENSIONS**

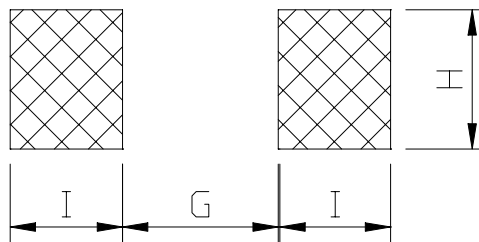
UNIT : mm



**A=3.2 max. B=3.2 max. D=1.5 max.**

**RECOMMENDED PATTERNS**

UNIT : mm



**G=2.2 H=1.3 I=1.05**



## SDC2D14J SERIES



RoHS Compliant

### ELECTRICAL CHARACTERISTICS :

PART NUMBER	INDUCTANCE ( $\mu$ H)	DCR (m $\Omega$ ) (Max.)	Isat (A) ( Max. )	Irms (A) ( Max. )	TEST FREQ. ( f )
SDC2D14J-1R5N-LF	1.5 $\pm$ 30%	85	1.39	2.07	100KHz
SDC2D14J-3R3N-LF	3.3 $\pm$ 30%	160	0.94	1.48	100KHz
SDC2D14J-4R7N-LF	4.7 $\pm$ 30%	190	0.76	1.38	100KHz
SDC2D14J-5R6N-LF	5.6 $\pm$ 30%	265	0.69	1.16	100KHz
SDC2D14J-6R8N-LF	6.8 $\pm$ 30%	300	0.61	1.10	100KHz
SDC2D14J-8R2N-LF	8.2 $\pm$ 30%	375	0.56	0.98	100KHz
SDC2D14J-100M-LF	10 $\pm$ 20%	420	0.51	0.93	100KHz
SDC2D14J-120M-LF	12 $\pm$ 20%	610	0.48	0.78	100KHz
SDC2D14J-150M-LF	15 $\pm$ 20%	695	0.43	0.73	100KHz
SDC2D14J-220M-LF	22 $\pm$ 20%	820	0.35	0.63	100KHz

Isat : DC current at which the inductance drops 30% (typ) from its value without current.

Irms : The actual current when temperature of coil becomes 40°C . ( Ta=+25°C )

Operating temperature range -25°C to +120°C, Electrical specifications at 25°C.

Packing : 7" reel, machine-ready ,embossed plastic tape ( 1,000 parts per full reel).