



# SDC2D18HP SERIES - Low Profile SMD Power Inductors

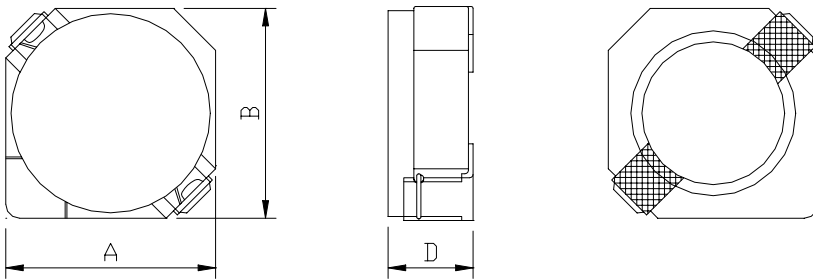


## PART NUMBERING SYSTEM

<b><u>SDC</u></b>	<b><u>2 D 1 8 H P</u></b>	-	<b><u>2 R 2 N</u></b>	-	<b><u>LF</u></b>
TYPE	DIMENSIONS		INDUCTANCE		LEAD FREE

## SHAPES AND DIMENSIONS

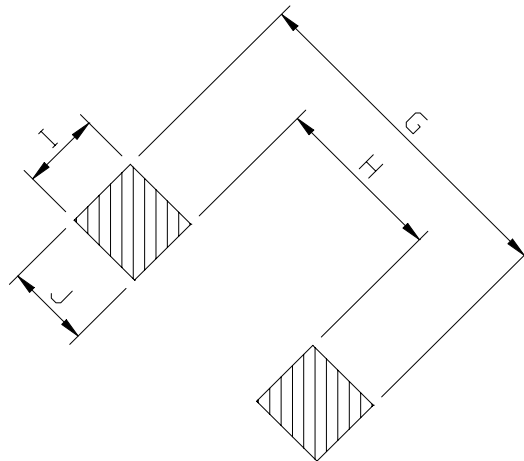
UNIT : mm



**A=3.20 max. B=3.20 max. D=2.0 max.**

## RECOMMENDED PATTERNS

UNIT : mm



**G= 4.3 H= 1.7 I= 1.3 J= 1.3**



## SDC2D18HP SERIES



RoHS Compliant

### ELECTRICAL CHARACTERISTICS :

PART NUMBER	INDUCTANCE ( $\mu$ H)	DCR (m $\Omega$ ) (Max.)	Isat (A) ( Max. )	Irms (A) ( Max. )	TEST FREQ. ( f )
SDC2D18HP-1R7N-LF	1.7 $\pm$ 30%	44	1.85	2.20	100KHz
SDC2D18HP-2R2N-LF	2.2 $\pm$ 30%	60	1.60	1.90	100KHz
SDC2D18HP-3R3N-LF	3.3 $\pm$ 30%	86	1.45	1.55	100KHz
SDC2D18HP-4R7N-LF	4.7 $\pm$ 30%	140	1.20	1.20	100KHz
SDC2D18HP-6R3N-LF	6.8 $\pm$ 30%	160	1.05	1.25	100KHz
SDC2D18HP-100N-LF	10 $\pm$ 30%	245	0.85	0.90	100KHz
SDC2D18HP-150N-LF	15 $\pm$ 30%	345	0.70	0.64	100KHz

Isat : DC current at which the inductance drops 35% (typ) from its value without current.

Irms: The actual current when temperature of coil becomes 40°C . ( Ta=+20°C )

Operating temperature range -40°C to +85°C , Electrical specifications at 20°C.

Packing : 13" reel, machine-ready ,embossed plastic tape ( 2,000 parts per full reel).