



**SDC3D11HP SERIES - Low Profile SMD Power Inductors**



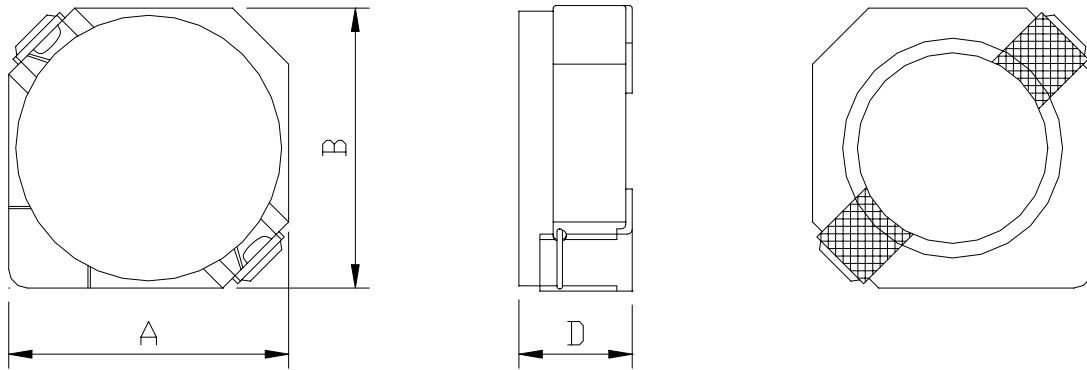
RoHS Compliant

**PART NUMBERING SYSTEM**

<b><u>SDC</u></b>	<b><u>3 D 1 1 H P</u></b>	-	<b><u>1 R 5 N</u></b>	-	<b><u>LF</u></b>
TYPE	DIMENSIONS		INDUCTANCE		LEAD FREE

**SHAPES AND DIMENSIONS**

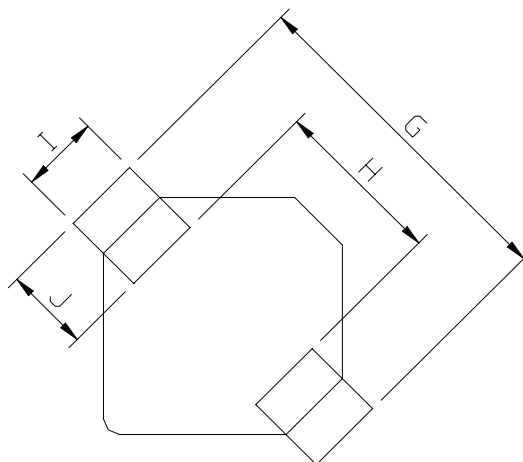
UNIT : mm



**A=4.0 max. B=4.0 max. D=1.2 max.**

**RECOMMENDED PATTERNS**

UNIT : mm



**G= 5.2 H= 2.4 I= 1.5 J= 1.4**



## SDC3D11HP SERIES - Low Profile SMD Power Inductors



RoHS Compliant

### ELECTRICAL CHARACTERISTICS :

PART NUMBER	INDUCTANCE ( $\mu$ H)	DCR (m $\Omega$ ) (Max.)	Isat (A) ( Max. )	Irms (A) ( Max. )	TEST FREQ. ( f )
SDC3D11HP-1R5N-LF	1.5 $\pm$ 30%	100m	2.000	1.45	100KHz
SDC3D11HP-2R7N-LF	2.7 $\pm$ 30%	125m	1.550	1.30	100KHz
SDC3D11HP-3R6N-LF	3.6 $\pm$ 30%	168m	1.350	1.00	100KHz
SDC3D11HP-4R7N-LF	4.7 $\pm$ 30%	200m	1.200	0.90	100KHz
SDC3D11HP-6R5N-LF	6.5 $\pm$ 30%	275m	1.050	0.80	100KHz
SDC3D11HP-100N-LF	10 $\pm$ 30%	360m	0.800	0.70	100KHz
SDC3D11HP-120N-LF	12 $\pm$ 30%	400m	0.750	0.65	100KHz
SDC3D11HP-150N-LF	15 $\pm$ 30%	550m	0.700	0.55	100KHz
SDC3D11HP-180N-LF	18 $\pm$ 30%	706m	0.600	0.47	100KHz
SDC3D11HP-220N-LF	22 $\pm$ 30%	925m	0.530	0.38	100KHz
SDC3D11HP-330N-LF	33 $\pm$ 30%	1.00	0.300	0.21	100KHz
SDC3D11HP-470N-LF	47 $\pm$ 30%	1.30	0.250	0.18	100KHz
SDC3D11HP-680N-LF	68 $\pm$ 30%	2.10	0.200	0.14	100KHz
SDC3D11HP-101N-LF	100 $\pm$ 30%	3.10	0.160	0.12	100KHz
SDC3D11HP-151N-LF	150 $\pm$ 30%	4.50	0.140	0.10	100KHz
SDC3D11HP-221N-LF	220 $\pm$ 30%	6.00	0.110	0.08	100KHz
SDC3D11HP-331N-LF	330 $\pm$ 30%	10.0	0.095	0.07	100KHz
SDC3D11HP-471N-LF	470 $\pm$ 30%	13.0	0.080	0.06	100KHz
SDC3D11HP-681N-LF	680 $\pm$ 30%	17.0	0.070	0.05	100KHz
SDC3D11HP-821N-LF	820 $\pm$ 30%	20.5	0.060	0.04	100KHz
SDC3D11HP-102N-LF	1000 $\pm$ 30%	25.0	0.050	0.04	100KHz
SDC3D11HP-152N-LF	1500 $\pm$ 30%	40.0	0.045	0.03	100KHz

Isat : DC current at which the inductance drops 35% (typ) from its value without current.

Irms: The actual current when temperature of coil becomes 40°C . ( Ta=+20°C )

Operating temperature range -40°C to +85°C , Electrical specifications at 20°C.

Packing : 13" reel, machine-ready ,embossed plastic tape ( 2,000 parts per full reel).