



**SDC3D16HP SERIES- Low Profile SMD Power Inductors**

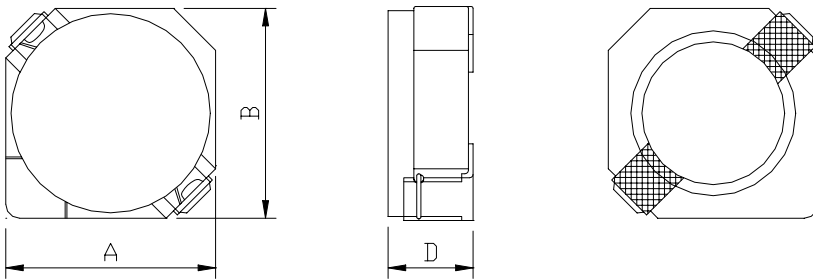


**PART NUMBERING SYSTEM**

<b><u>SDC</u></b>	<b><u>3 D 1 6 H P</u></b>	-	<b><u>1 R 7 N</u></b>	-	<b><u>LF</u></b>
TYPE	DIMENSIONS		INDUCTANCE		LEAD FREE

**SHAPES AND DIMENSIONS**

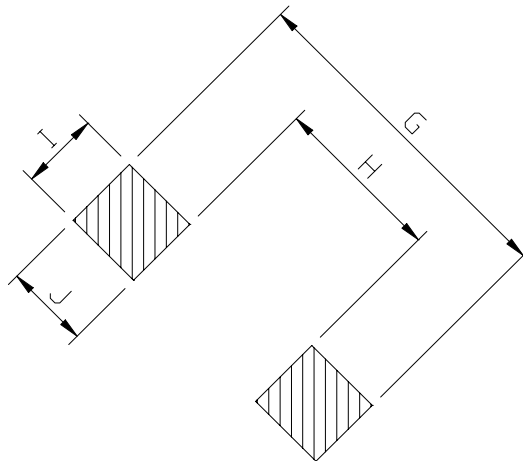
UNIT : mm



**A=4.00 max. B=4.00 max. D=1.8 max.**

**RECOMMENDED PATTERNS**

UNIT : mm



**G= 5.2 H= 2.4 I= 1.5 J= 1.4**



## SDC3D16HP SERIES- Low Profile SMD Power Inductors



RoHS Compliant

### SPECIFICATION TABLE

PART NUMBER	INDUCTANCE ( $\mu$ H)	DCR (m $\Omega$ ) (Max.)	Isat (A) ( Max. )	Irms (A) ( Max. )	TEST FREQ. ( f )
SDC3D16HP-1R7N-LF	1.7 $\pm$ 30%	51	2.00	2.40	100KHz
SDC3D16HP-2R2N-LF	2.2 $\pm$ 30%	59	1.75	2.30	100KHz
SDC3D16HP-3R3N-LF	3.3 $\pm$ 30%	85	1.40	1.80	100KHz
SDC3D16HP-4R7N-LF	4.7 $\pm$ 30%	116	1.20	1.50	100KHz
SDC3D16HP-6R8N-LF	6.8 $\pm$ 30%	180	1.00	1.10	100KHz
SDC3D16HP-100M-LF	10 $\pm$ 30%	230	0.84	1.00	100KHz
SDC3D16HP-150M-LF	15 $\pm$ 30%	410	0.65	0.75	100KHz
SDC3D16HP-220M-LF	22 $\pm$ 30%	610	0.55	0.52	100KHz
SDC3D16HP-330M-LF	33 $\pm$ 30%	870	0.46	0.41	100KHz

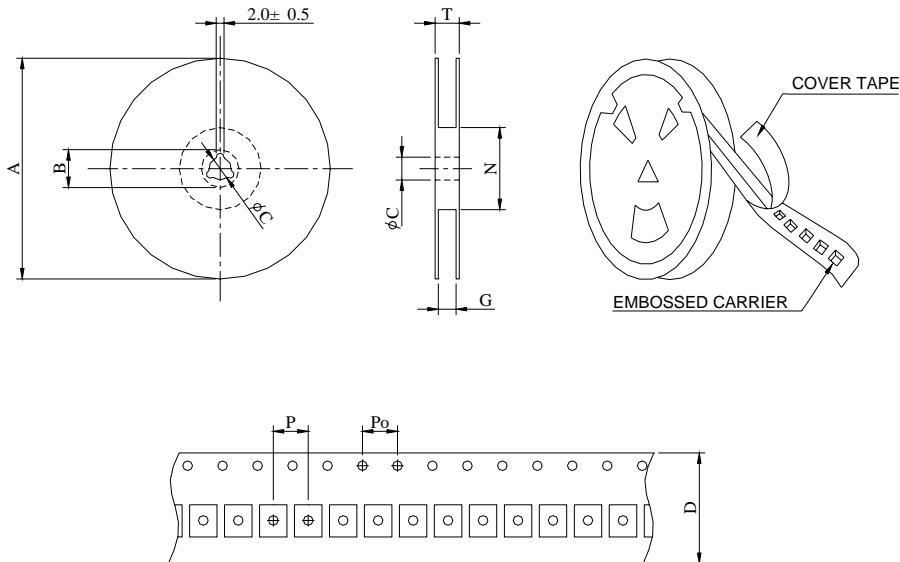
Isat : DC current at which the inductance drops 35% (typ) from its value without current.

Irms: The actual current when temperature of coil becomes 40°C . ( Ta=+20°C )

Operating temperature range -40°C to +85°C , Electrical specifications at 20°C.

Packing : 13" reel, machine-ready ,embossed plastic tape ( 2,000 parts per full reel)..

### PACKAGING SPECIFICATION



SERIES	STAYLE	Q ' TY (PCS)	DIMENSIONS (m/m)								
			A	B $\pm$ 0.8	C $\pm$ 0.5	D	G <sup>+</sup>	N <sup>0</sup>	P	Po	T
SDC3D16HP	13-16	2000	330	21	13	16	18	50	8	4	22.4