



SDC3D16LD SERIES- Low Profile SMD Power Inductors



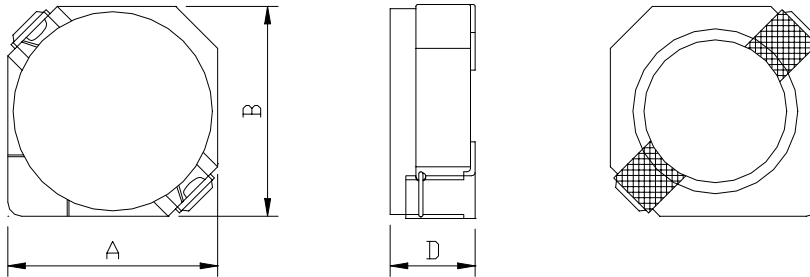
RoHS Compliant

PART NUMBERING SYSTEM

<u>SDC</u>	<u>3 D 1 6 L D</u>	-	<u>3 R 3 N</u>	-	<u>LF</u>
TYPE	DIMENSIONS		INDUCTANCE		LEAD FREE

SHAPES AND DIMENSIONS

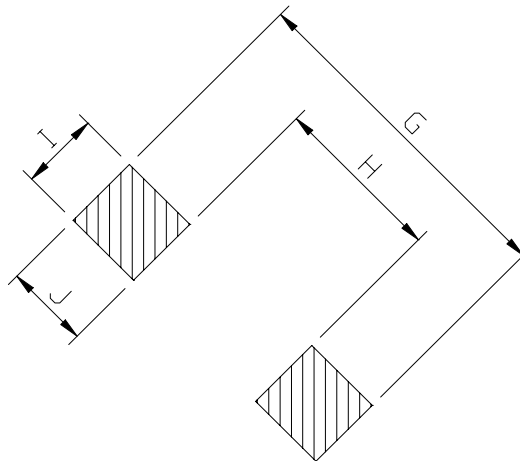
UNIT : mm



A=4.00 max. B=4.00 max. D=1.8 max.

RECOMMENDED PATTERNS

UNIT : mm



G= 5.2 H= 2.4 I= 1.5 J= 1.4



SDC3D16LD SERIES- Low Profile SMD Power Inductors



RoHS Compliant

SPECIFICATION TABLE

PART NUMBER	INDUCTANCE (μ H)	DCR (m Ω) (Max.)	Isat (A) (Max.)	Irms (A) (Max.)	TEST FREQ. (f)
SDC3D16LD-3R3N-LF	3.3 \pm 30%	66	0.80	2.00	100KHz
SDC3D16LD-3N9N-LF	3.9 \pm 30%	81	0.75	1.75	100KHz
SDC3D16LD-4R7N-LF	4.7 \pm 30%	91	0.68	1.72	100KHz
SDC3D16LD-5N6N-LF	5.6 \pm 30%	102	0.62	1.64	100KHz
SDC3D16LD-6N8N-LF	6.8 \pm 30%	130	0.58	1.30	100KHz
SDC3D16LD-8N2N-LF	8.2 \pm 30%	140	0.51	1.28	100KHz
SDC3D16LD-100N-LF	10 \pm 30%	190	0.46	1.07	100KHz
SDC3D16LD-120N-LF	12 \pm 30%	205	0.42	0.98	100KHz
SDC3D16LD-150N-LF	15 \pm 30%	272	0.38	0.87	100KHz
SDC3D16LD-180N-LF	18 \pm 30%	327	0.34	0.76	100KHz
SDC3D16LD-220N-LF	22 \pm 30%	356	0.31	0.66	100KHz
SDC3D16LD-270N-LF	27 \pm 30%	470	0.28	0.60	100KHz
SDC3D16LD-330N-LF	33 \pm 30%	560	0.26	0.55	100KHz
SDC3D16LD-390N-LF	39 \pm 30%	700	0.24	0.47	100KHz
SDC3D16LD-470N-LF	47 \pm 30%	775	0.21	0.45	100KHz

Isat : DC current at which the inductance drops 35% (typ) from its value without current.

Irms: The actual current when temperature of coil becomes 40°C . (Ta=+20°C)

Operating temperature range -40°C to +85°C , Electrical specifications at 20°C.

Packing : 13" reel, machine-ready ,embossed plastic tape (2,000 parts per full reel).

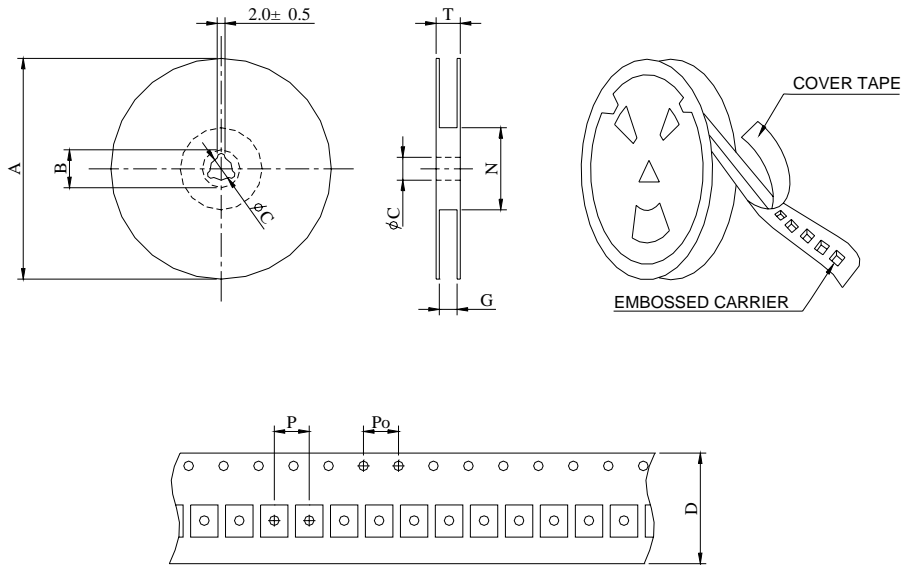


SDC3D16LD SERIES- Low Profile SMD Power Inductors



RoHS Compliant

PACKAGING SPECIFICATION



SERIES	STAYLE	Q ' TY (PCS)	DIMENSIONS (m/m)								
			A	B±0.8	C±0.5	D	G ⁺⁰	N ⁻⁰	P	Po	T
SDC3D16LD	13-16	2000	330	21	13	16	18	50	8	4	22.4