



SDO5040 SERIES



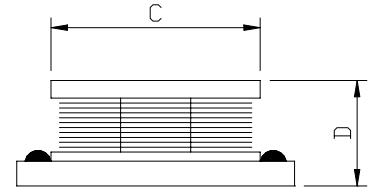
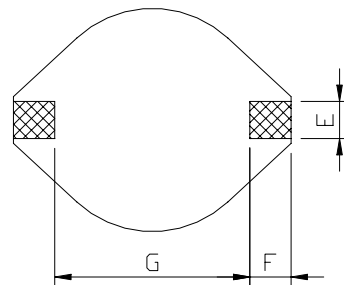
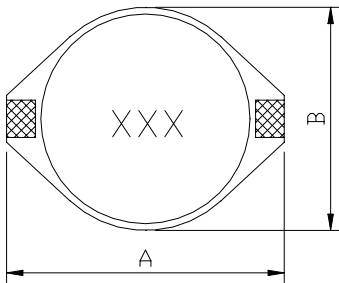
RoHS Compliant

PART NUMBERING SYSTEM

<u>SDO</u>	<u>5 0 4 0</u>	-	<u>1 0 0 M</u>	-	<u>LF</u>
TYPE	DIMENSIONS		INDUCTANCE		LEAD FREE

SHAPES AND DIMENSIONS

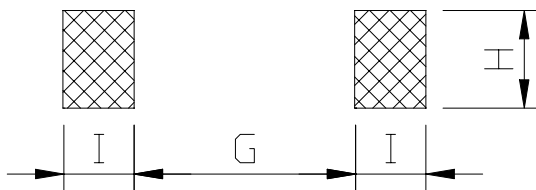
UNIT : mm



A=18.54 Max. B=15.24 Max. C=12.70 Dia. D=11.43 Max. E=2.54 F=2.54 G=12.7

RECOMMENDED PATTERNS

UNIT : mm



G=12.7 H=2.79 I=2.92



SDO5040 SERIES

SPECIFICATION TABLE

PART NUMBER	INDUCTANCE (μ H)	DCR (m Ω) (Max.)	Isat (A) (Max.)	Irms (A) (Max.)	SRF(MHz) (Ref.)
SDO5040-150M-LF	15 \pm 20%	20	13.8	6.5	18
SDO5040-180M-LF	18 \pm 20%	22	13.2	6.0	14
SDO5040-220M-LF	22 \pm 20%	24	11.8	5.7	13
SDO5040-330M-LF	33 \pm 20%	37	9.6	4.5	10
SDO5040-470M-LF	47 \pm 20%	52	7.8	3.7	8.0
SDO5040-680M-LF	68 \pm 20%	67	6.7	3.4	7.0
SDO5040-101M-LF	100 \pm 20%	115	5.6	2.8	6.0

Inductors tolerance M= \pm 20%.

DCR limits at 20°C.

DC current at which the inductance drops 10% (typ) from its value without current.

Operating temperature range -40 to +85 .

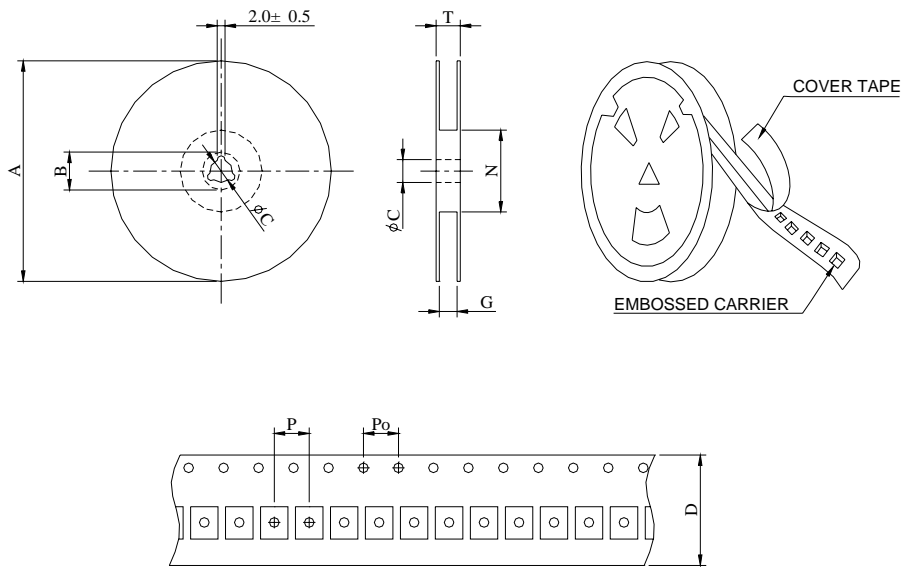
Electrical specifications at 25 .

Packing : 13" reel, machine-ready ,embossed plastic tape (160 parts per full reel).



SDO5040 SERIES

PACKAGING SPECIFICATION



SERIES	STAYLE	Q ' TY (PCS)	DIMENSIONS (m/m)								
			A	B±0.8	C±0.5	D	G ⁺⁰	N ⁰	P	Po	T
SDO5040	13-32	160	330	21	13	32	34	100	20	4	38.4