



SSB5225 SERIES – SMD Power Inductors

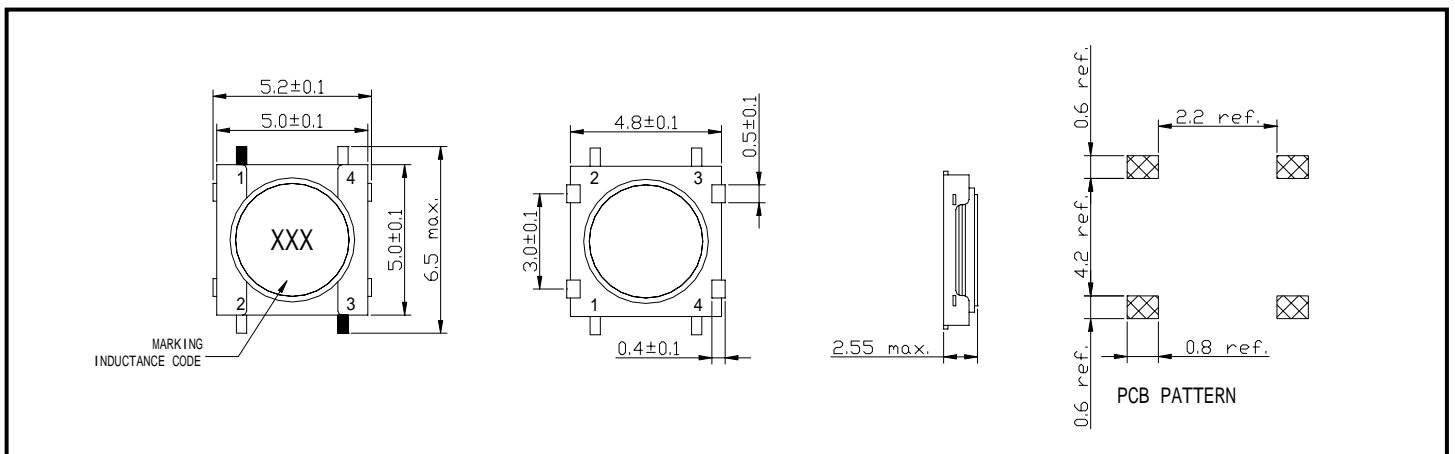


PART NUMBERING SYSTEM

SSB	5 2 2 5	-	1 0 1 M	-	LF
TYPE	DIMENSIONS		INDUCTANCE		LEAD FREE

SHAPES AND DIMENSIONS

UNIT : mm



SPECIFICATION TABLE

PART NUMBER	INDUCTANCE (μ H)	DCR () (max)	IDC (A) (max)	TEST FREQ. (f)
SSB5225-101M-LF	100	1.6	0.45	1KHz
SSB5225-151M-LF	150	2.5	0.35	1KHz
SSB5225-221M-LF	220	3.8	0.30	1KHz
SSB5225-331M-LF	330	5.9	0.25	1KHz
SSB5225-471M-LF	470	7.5	0.22	1KHz
SSB5225-681M-LF	680	12.0	0.18	1KHz
SSB5225-102M-LF	1000	20.0	0.14	1KHz
SSB5225-152M-LF	1500	25.0	0.12	1KHz
SSB5225-222M-LF	2200	45.0	0.09	1KHz
SSB5225-332M-LF	3300	60.0	0.08	1KHz

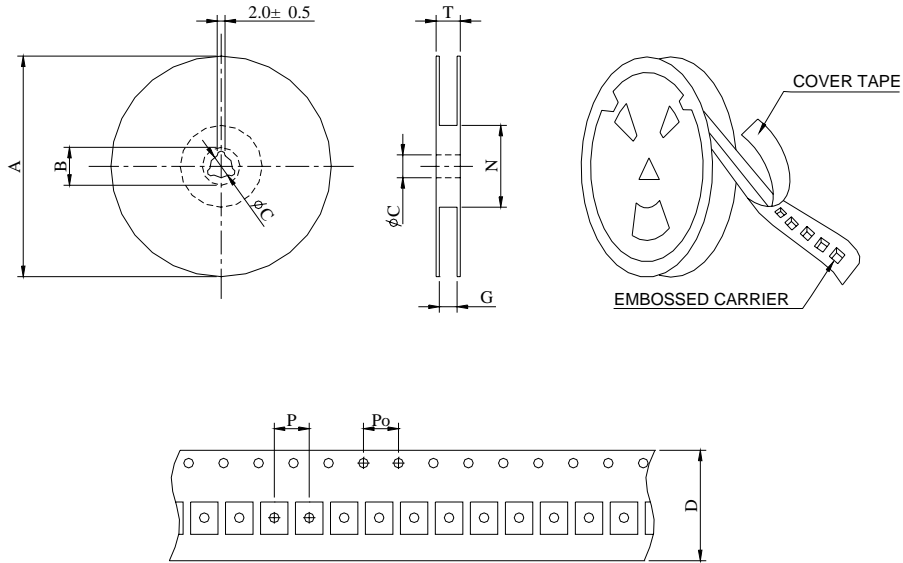
1. Operating temperature range : -40 to + 80 .
2. Test equivalent : HP4284A LCR meter or equivalent .
3. Electrical specifications at 25 .

SSB5225 SERIES – SMD Power Inductors



RoHS Compliant

PACKAGING SPECIFICATION



SERIES	STAYLE	Q ' TY (PCS)	DIMENSIONS (m/m)								
			A	B±0.8	C±0.5	D	G ⁺⁰	N ⁰	P	Po	T
SSB5225	13-16	2000	330	21	13	16	18	50	8	4	22.4