



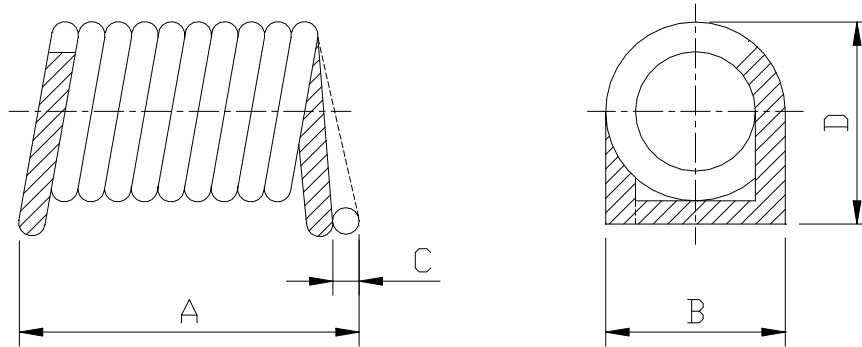
Spring Air Core Inductors ~ SS2012 Series



FEATURES

- SMD type air core inductor .
- Tape / Reel packaging available for auto-insertion .
- High Q coils .

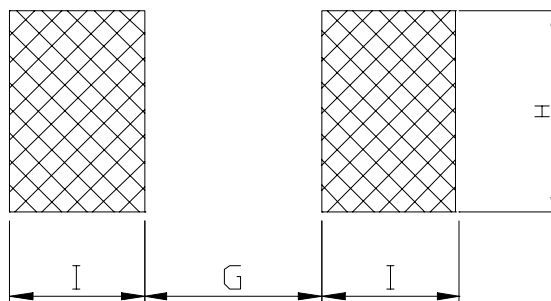
SHAPES AND DIMENSIONS



A=2.5 Max. B=1.6 Max. C=0-0.3 D=1.9 Max.

RECOMMENDED PATTERNS

UNIT : mm



G=0.76±0.1 H=1.78 Ref. I=1.02±0.05



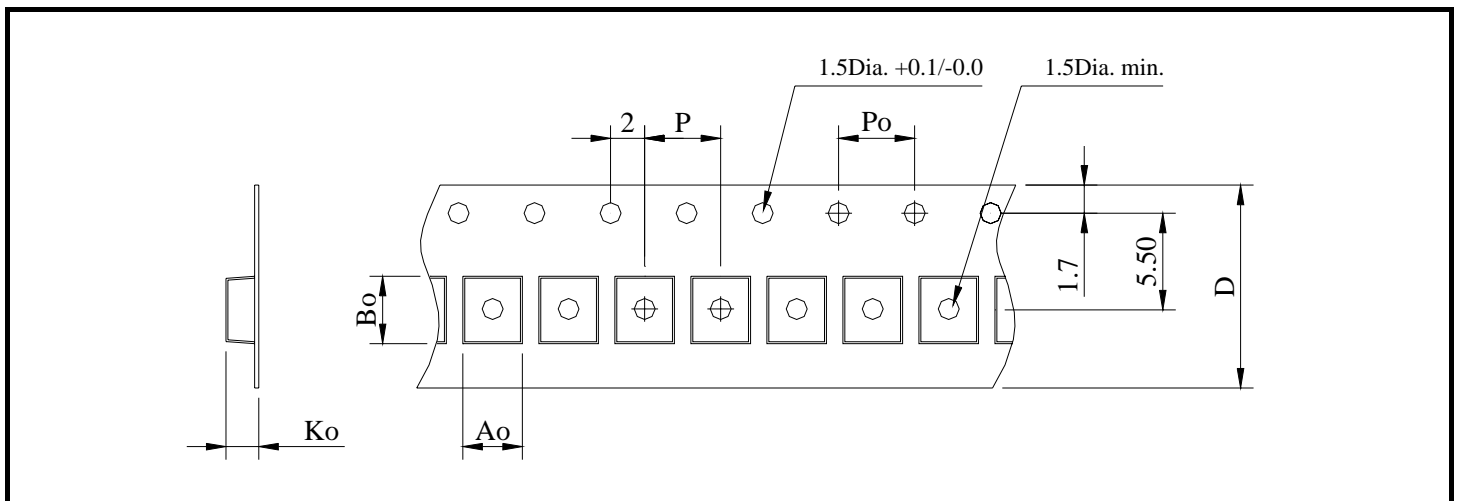
Spring Air Core Inductors ~ SS2012 Series

SS2012 SERIES

PART NUMBER	INDUCTANCE (nH)	TEST FREQ. (MHZ)	Q. (Min.)	DCR (m) (Max)	SRF (MHz) (Min.)	Irms (mA) (Max)
SS2012-3N9K-LF	3.9±10%	300	80	2.6	3000	1200
SS2012-4N7K-LF	4.7±10%	300	80	3.6	3000	900
SS2012-5N6K-LF	5.6±10%	300	80	3.7	3000	950
SS2012-6N8K-LF	6.8±10%	300	80	4.5	3000	900
SS2012-8N2K-LF	8.2±10%	300	80	5.3	3000	840
SS2012-10NK-LF	10±10%	300	70	5.4	3000	900
SS2012-12NK-LF	12±10%	300	70	6.3	3000	900
SS2012-15NK-LF	15±10%	300	70	7.2	2500	900
SS2012-18NK-LF	18±10%	300	70	12.5	2500	500
SS2012-22NK-LF	22±10%	300	70	12.9	2400	550
SS2012-27NK-LF	27±10%	300	70	14.5	1600	550
SS2012-33NK-LF	33±10%	300	70	18.7	1600	500
SS2012-39NK-LF	39±10%	300	70	25.7	1500	380
SS2012-47NK-LF	47±10%	300	70	34.5	1500	320
SS2012-56NK-LF	56±10%	300	70	38.4	1300	320
SS2012-R68K-LF	68±10%	300	70	42.2	1300	320

* Operating temperature range : -40 to +125 .

PACKAGING SPECIFICATION



STAYLE	Q ' TY (PCS)	DIMENSIONS (m/m)					
		A_o	B_o	K_o	P	P_o	$D\pm 0.3$
13"	4,000	1.35 ± 0.1	2.35 ± 0.1	1.75 ± 0.1	4.0 ± 0.1	4.0 ± 0.1	12.0